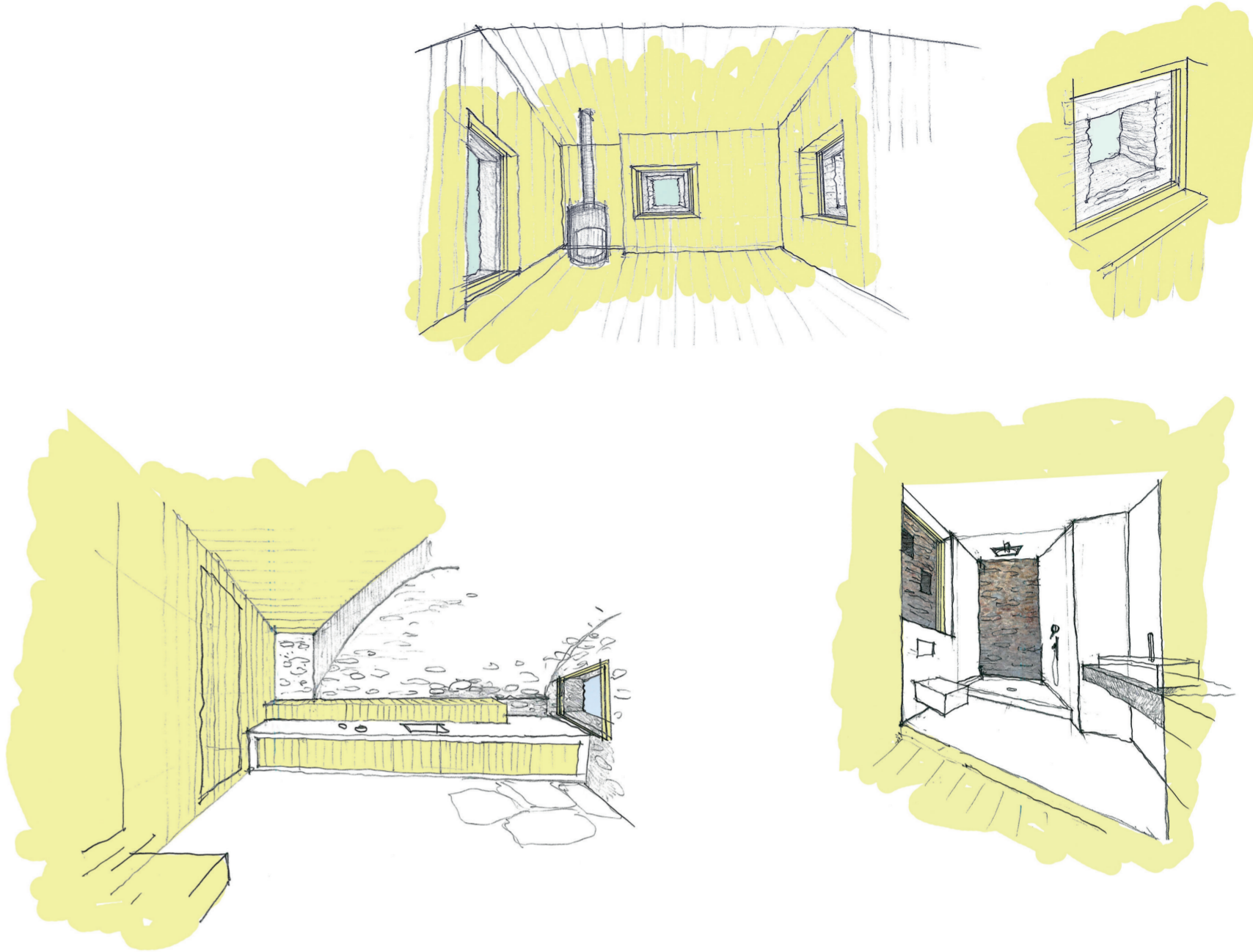
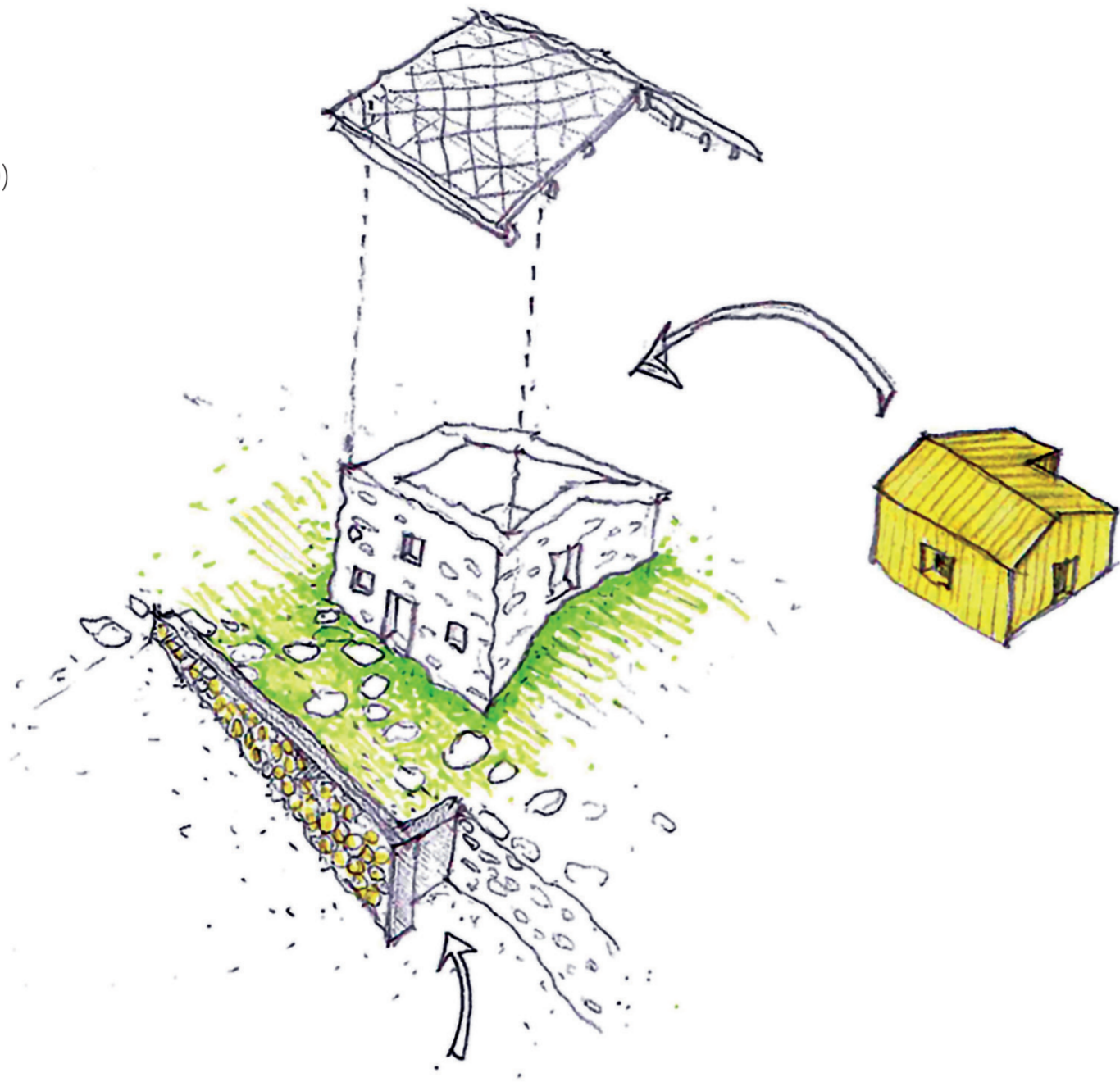


# LA BAITA

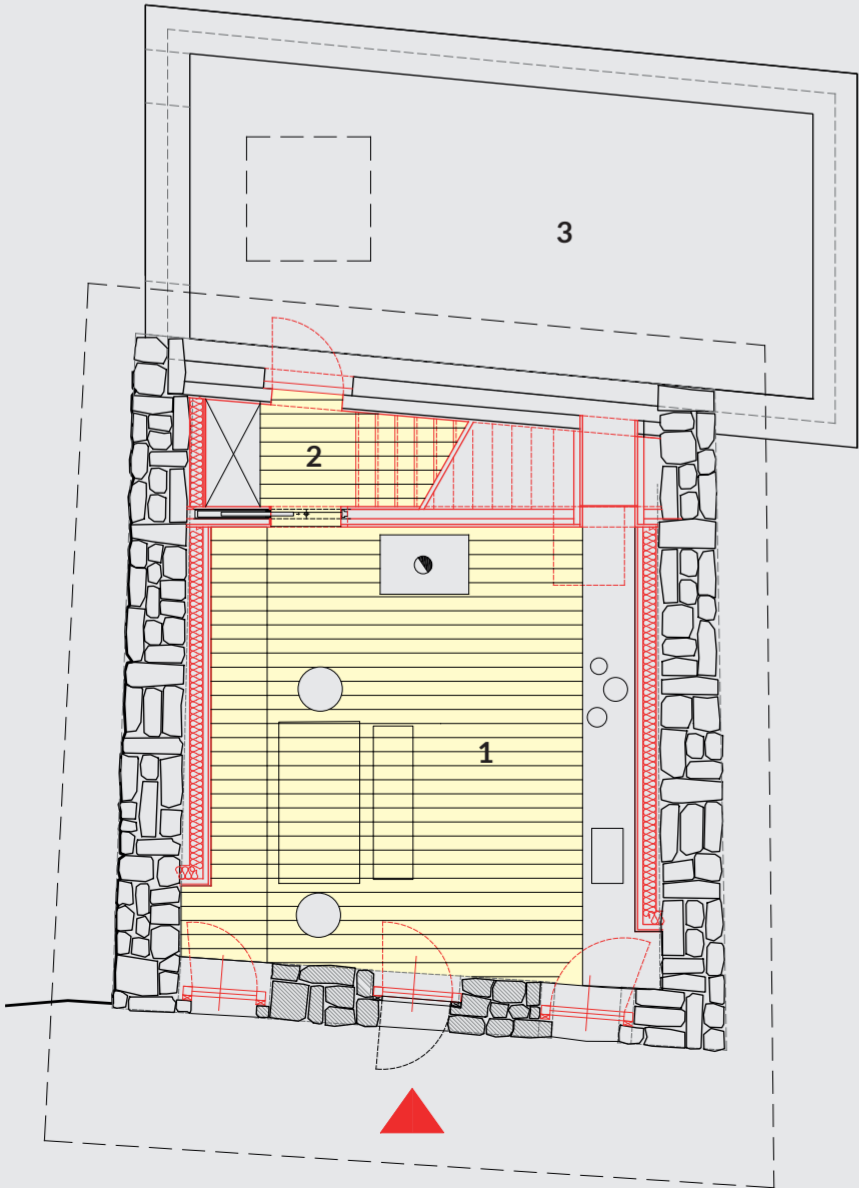
Abitare un rudere

Frassinetto - Borgata Berchiotto (TO)  
2015-2019



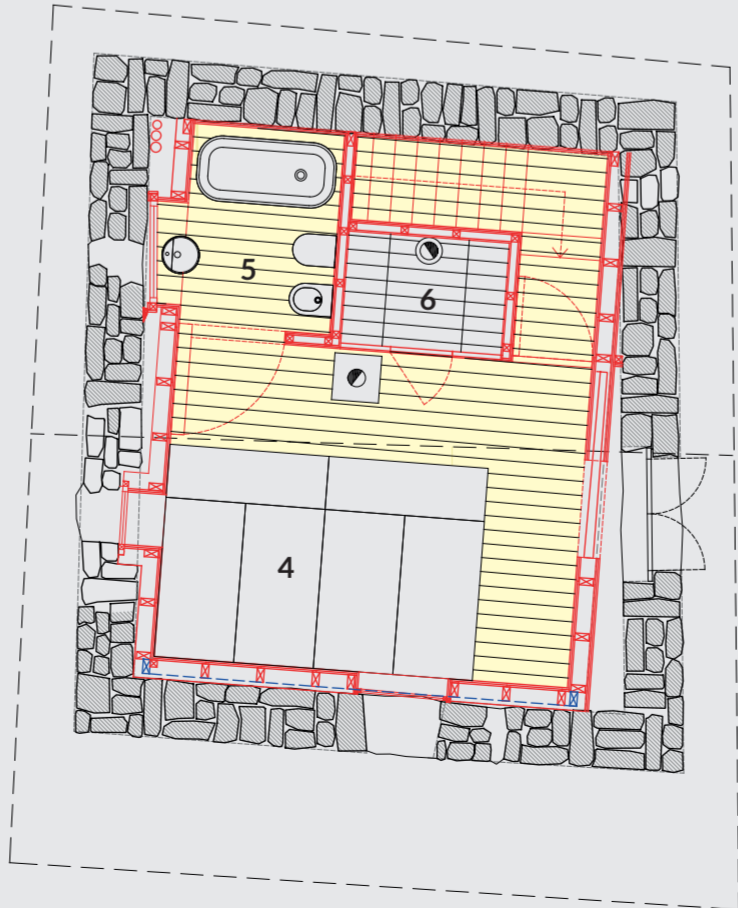
Pianta zona giorno

- 1. Zona giorno
- 2. Disimpegno scala
- 3. Cantina



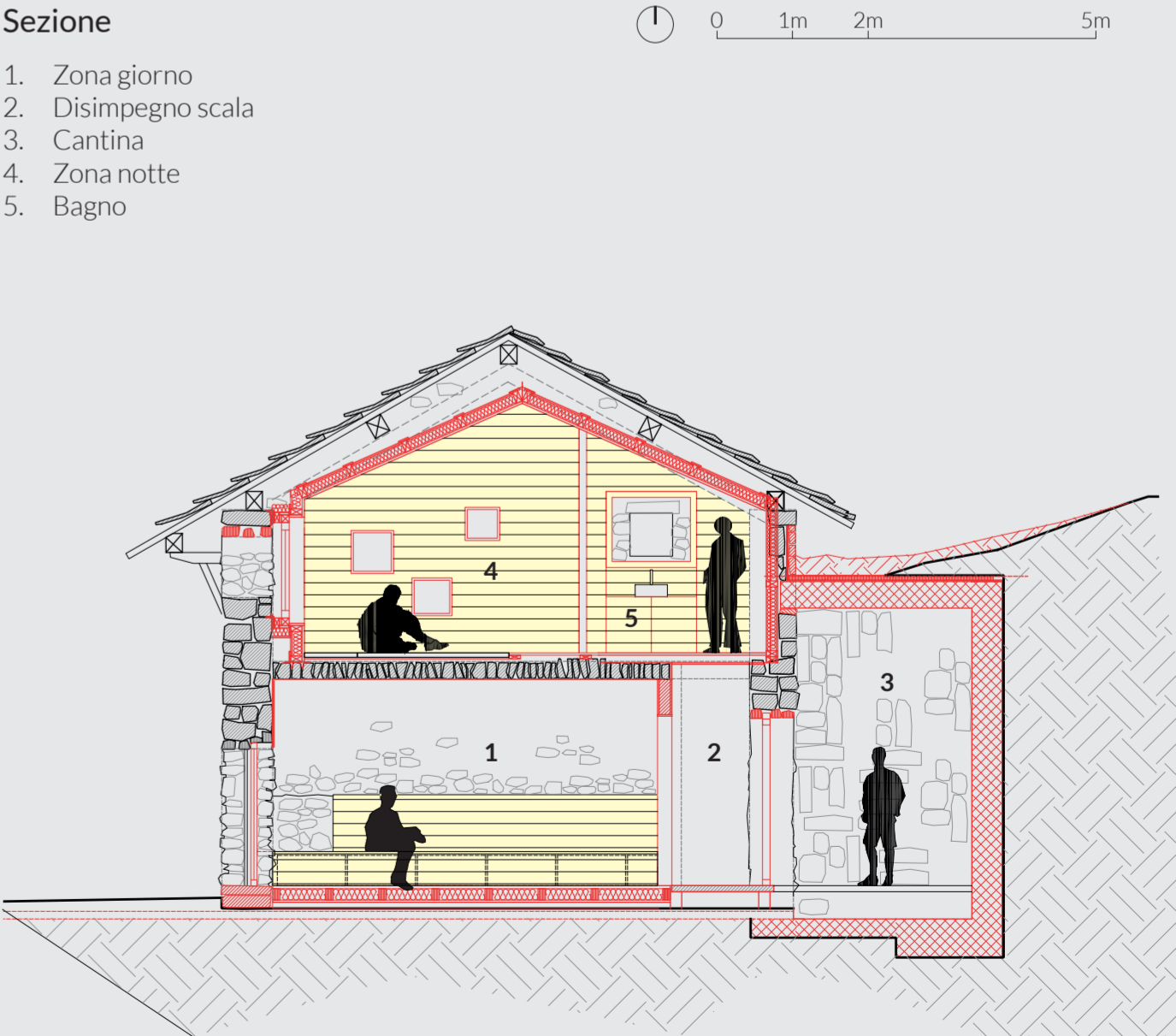
Pianta zona notte

- 4. Zona notte
- 5. Bagno
- 6. Cabina armadi



Sezione

- 1. Zona giorno
- 2. Disimpegno scala
- 3. Cantina
- 4. Zona notte
- 5. Bagno



# LA BAITA

Abitare un rudere

Frassinetto - Borgata Berchiotto (TO)  
2015-2019





